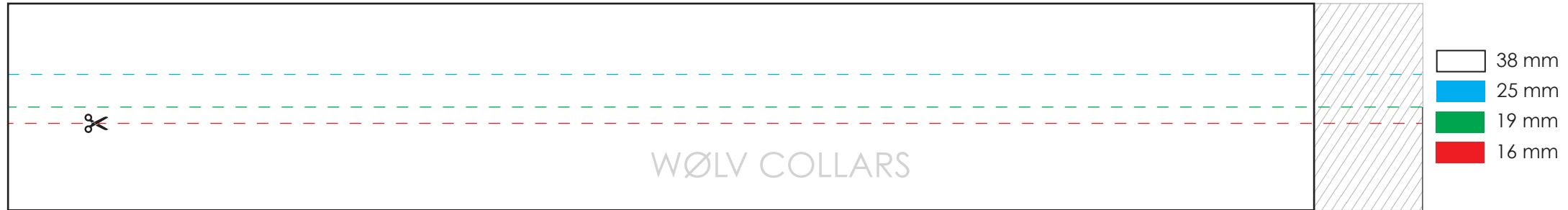


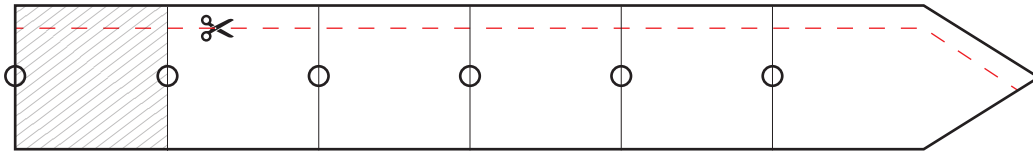


Cut the measurement of the size you need and stick them together using some tape or glue. Place around your fluffs' neck to see if this size is right for you.  
For more info, watch our reels video on our Instagram - @wolv\_collars or on our website.

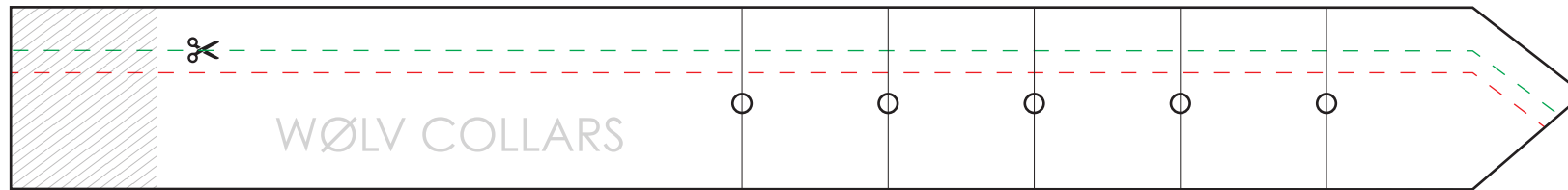
## (1) ALL SIZES



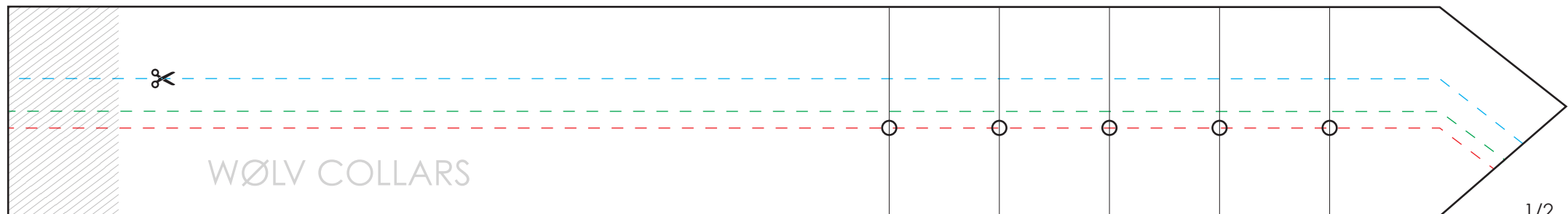
## (2) XS (24 - 34 CM / 10,2 - 13,4")



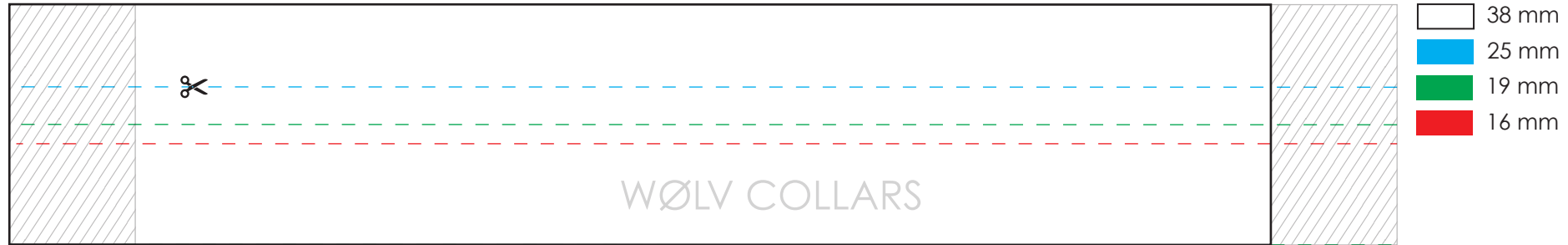
## (2) S (34 - 42 CM / 13,4 - 16,5")



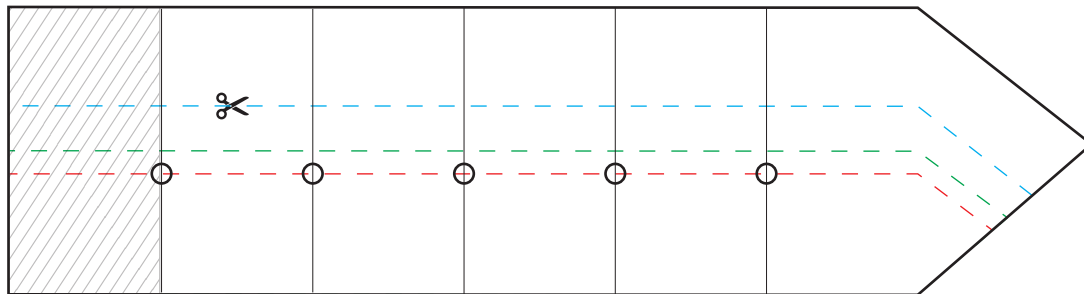
## (2) M (40 - 48 CM / 15,8 - 18,9")



## (2) L & XL



## (3) L (46 - 54 CM / 18,1 - 21,3")



## (3) XL (52 - 60 CM / 20,5 - 23,6")

